

TAWS

by Unipart Rail

Train Approaching Warning System



View the TAWS safety animation

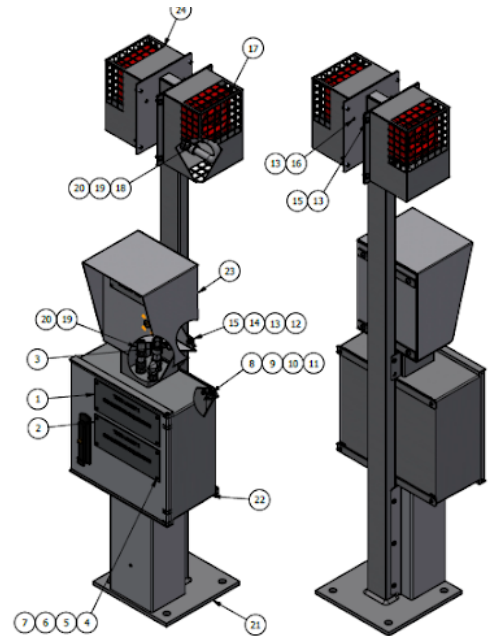


PERFORMANCE IMPROVEMENT PARTNER

TAWS detects train movements well in advance, issuing audible warning to alert workers of an approaching train.

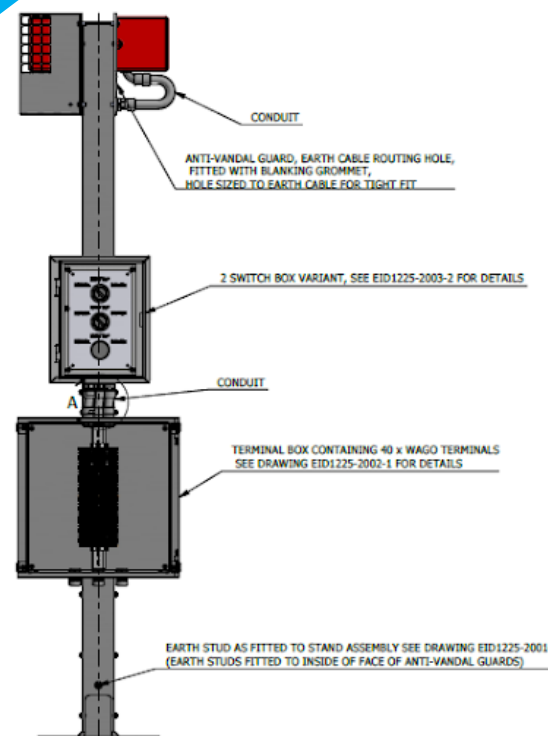
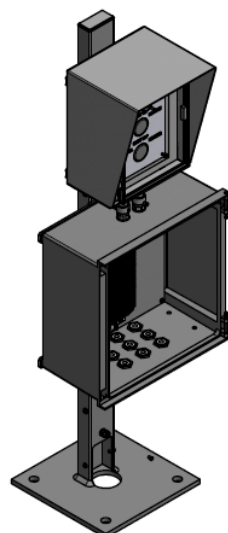
TAWS is a cutting-edge product designed to provide timely alerts to rail workers about approaching trains, ensuring their safety in high-risk environments.

Linked to axle counters, TAWS detects train movements well in advance, issuing an audible warning to alert workers of an approaching train.



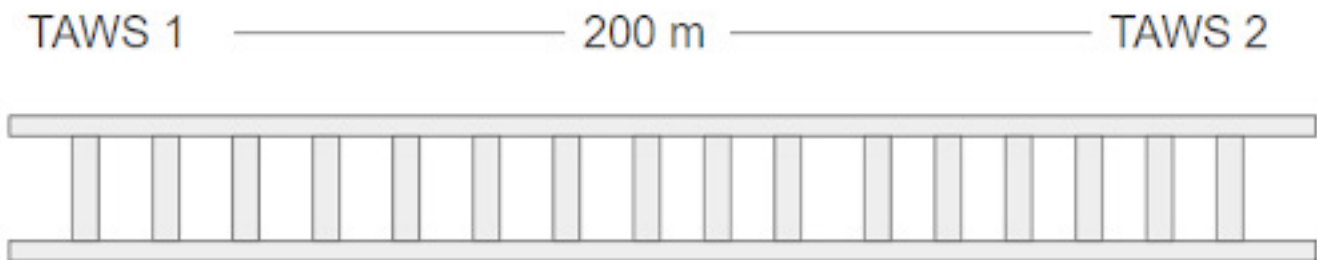
Mechanical specification:

- Fabricated galvanised metal stand fixed to an SPT concrete base
- Terminal box for wiring connection, each TAWS unit is unique and has bespoke build dependant on site application
- Switch box (1, 2, or 3 switch variants)
- Yodalarm (0, 1, 2 Alarm variants)
- Anti-Vandal guards
- Earthing to ground connection studs



Why choose TAWS?

- Yodalarms beep Intermittently to indicate they are functional to workers
- Trains are detected by the axle counter when entering a block which alerts the signaller
- TAWS is activated to provide a continuous tone to warn track workers
- Once the train has passed the intermittent tone is reset and workers return
- This cascades along the TAWS units down the track



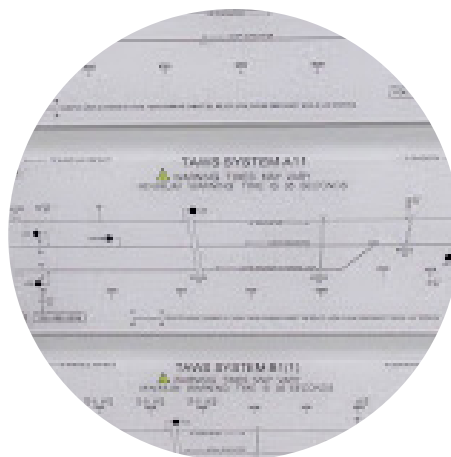
Example of installation distances

Electrical specification:

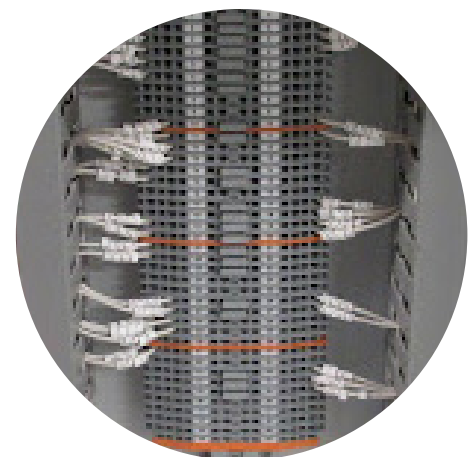
- Terminal box for wiring connection, each TAWS unit is unique and has bespoke wiring dependant on site application
- Switch box (1, 2, or 3 switch variants)
- Yodalarm (0, 1, 2 Alarm variants)
- Earthing to ground connection studs
- NR PA parts selected for quality & longevity
- In accordance with NR/L3/SIG/11303



Selector Switches



Unit Mimic



Terminal Rail

About Unipart

Unipart Group is a leading provider of supply chain solutions and performance improvement technologies. It has deep expertise and breadth of capabilities in seven core sectors – automotive, rail and public transport, technology, healthcare, aerospace and defence, e-commerce, consumer and retail, and industrial sectors.

Unipart's customer promise is: 'To understand the real and perceived needs of our customers better than anyone else and to serve them better than anyone else.' At the heart of delivering this is 'The Unipart Way', which is demonstrated in the way colleagues think, work and behave. The Unipart Way empowers more than 12,000 colleagues across operations in the UK and 20 international markets with a continuous improvement mindset, delivering operational excellence and added value for customers, everyday.

In 2023 Unipart delivered £1bn turnover. In 2024 it is celebrating the 50th Anniversary of the Unipart brand, having been a division within British Leyland in 1974 and becoming a private company through a management buyout in 1987.

Unipart is committed to setting the highest standards for colleague safety and wellbeing and sustainability. In 2023 it became the first organisation ever to be recognised with a world-class safety, wellbeing and sustainability 'treble' by the British Safety Council, and had its ambitious near-term and net-zero targets validated by the Science Based Targets initiative (SBTi).

Unipart Rail

Jupiter Building, First Point, Balby Carr Bank,
Doncaster DN4 5JQ

Tel: +44 (0) 1302 731400

email: enquiries@unipartrail.com



Visit www.unipartrail.com for details
of our Worldwide Regional Offices