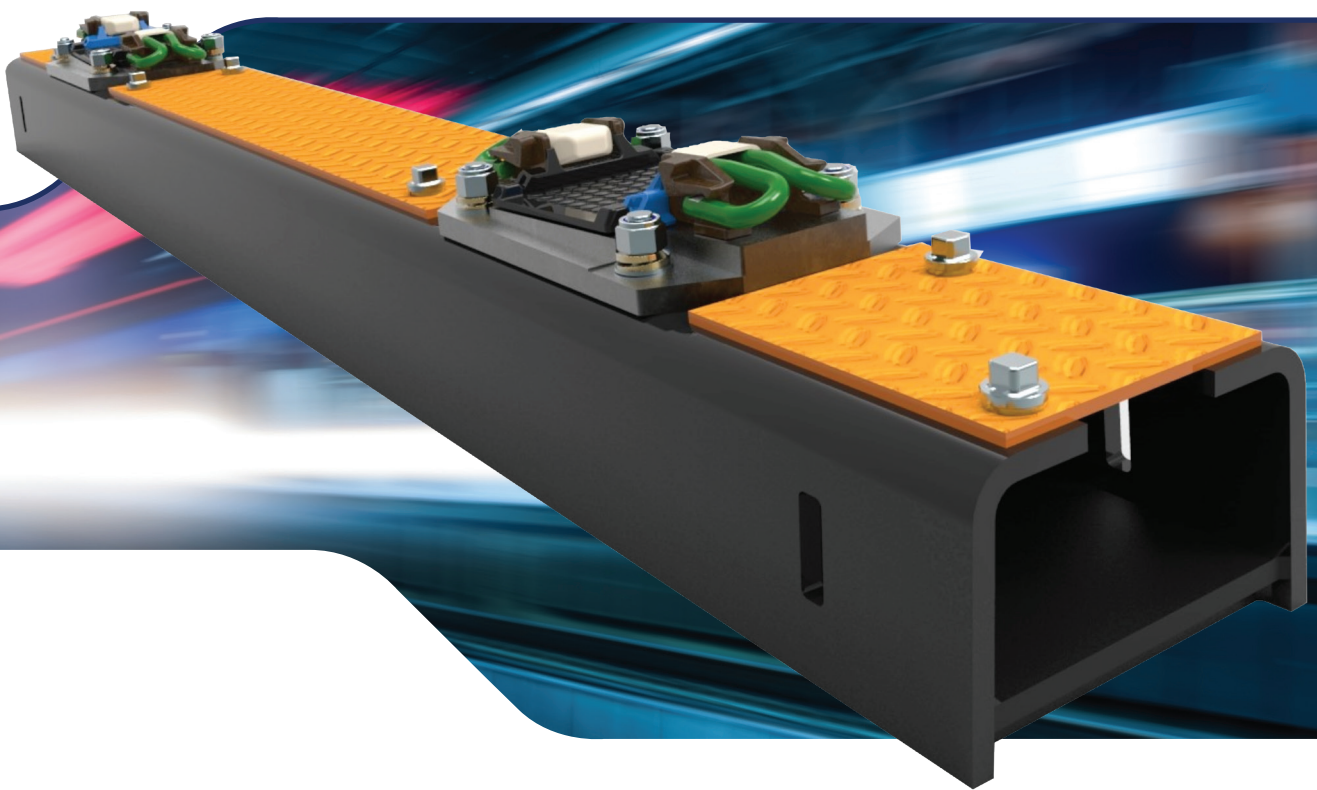


Hollow Sleeper

from Unipart Rail

Under track cable management made simple



More cost effective than a UTX crossing

Much reduced possession time for installation

Removable covers and baseplates allow installation without re-termination of cables

Reduced possession time during maintenance

All gauges and baseplate solutions available

Trackwork Hollow Sleepers for added protection.

Use of Hollow Sleepers

Hollow sleepers provide protection against accidental damage to cross track cables and the associated costs of reinstatement, and now offer the most cost effective UTX (under track crossing) solution. They are generally supplied with fittings in place, which can then be removed to allow existing cabling to be "gathered" into the sleeper. Sleepers are also supplied with the required fastenings. We can also devise bespoke solutions for local requirements.

One such solution was the provision of additional end cover plates to prevent ballast entering the sleeper during installation using local methods.

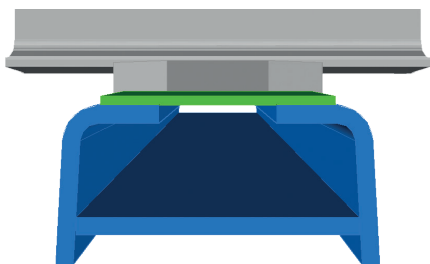
Technical

Sleeper weight is between 250kg and 260kg depending on type and gauge.

The current sleeper has been tested and approved for 25 tonne axleloads, and a variation has been successfully tested for 30 tonne axleloads.

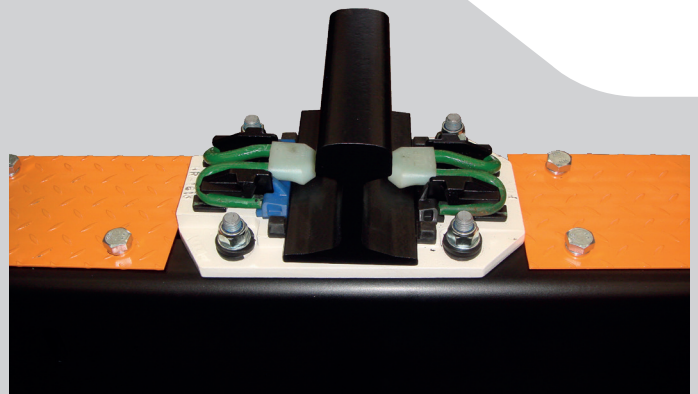
Sleeper section is fabricated steel with chequer plate steel covers and cast/machined baseplates to suit fastening system required.

Pandrol and Vossloh fastenings utilise hook-in shoulder assemblies.



Applications

We are currently supplying sleepers with dual rail fittings to suit 47/50kg and 53/60kg rail, with inclined or vertical rail seats and Pandrol e-Clip fittings to suit 1 435 or 1 600 track gauge. These are available in two depths, "full" depth has an equivalent sleeper soffit to rail depth of 200mm or the "shallow" depth having a depth of 165mm. We can also offer Pandrol Fastclip or Vossloh fastenings, and can adapt for other fastening systems.



Our Hollow Sleepers are manufactured in the UK by Trackwork Ltd, with a fully comprehensive range covering all UK track configurations and easily adapted to suit all other major track systems.

They have full Network Rail product approval (PA Cert PA05/04632) and are installed extensively throughout the UK, Australia and Europe, with over 7,000 units in active service.



Unipart Rail

Jupiter Building, First Point, Balby Carr Bank,
Doncaster DN4 5JQ

Tel: +44 (0) 1302 731400

email: enquiries@uniparttrail.com



Visit www.uniparttrail.com for details
of our Worldwide Regional Offices