



# TrackPan

Designed and engineered to protect the environment



**UNIPART**  
 **RAIL**

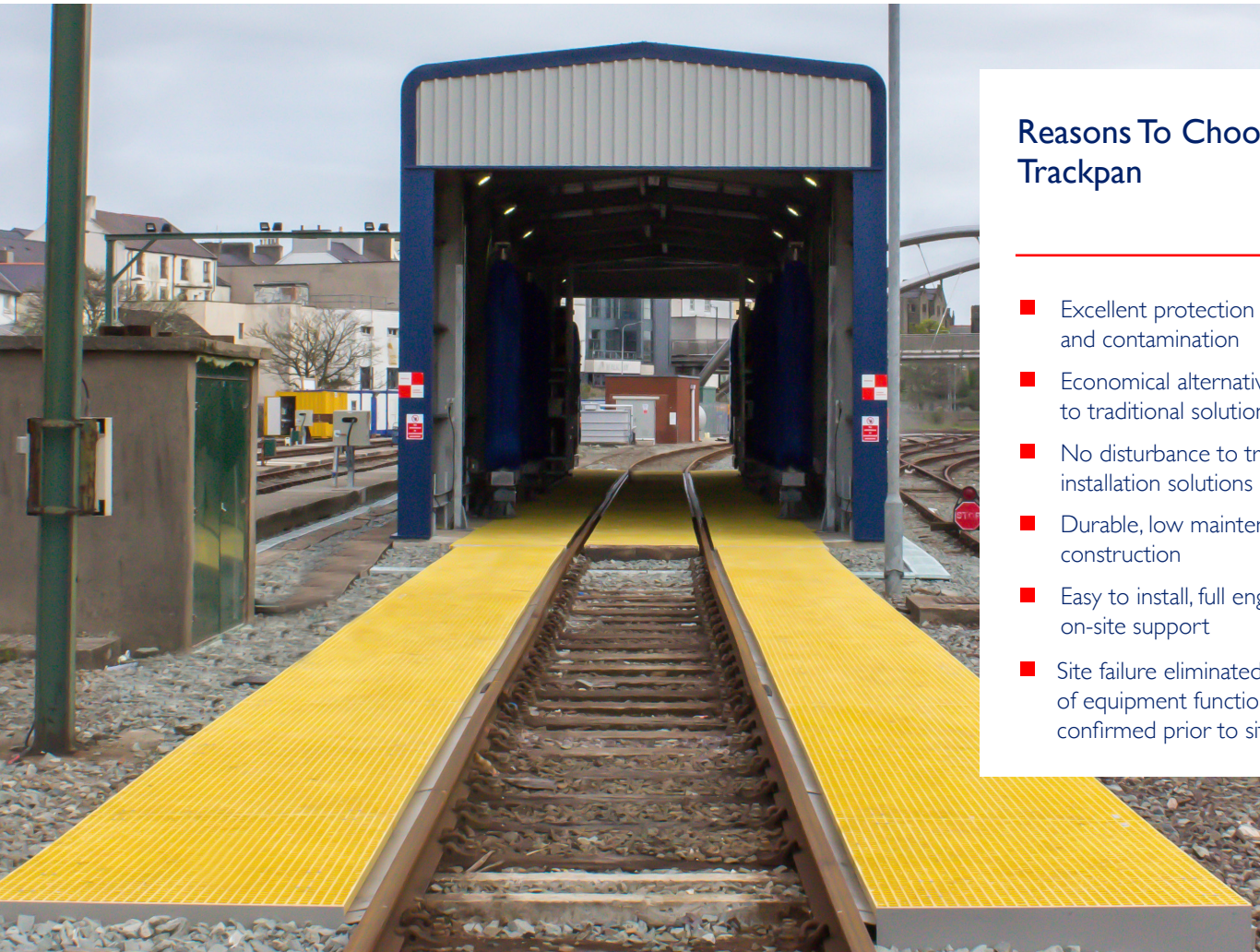


# Designed and engineered to protect the environment from contamination caused by spillage and leaks on the rail network



The Unipart Rail TrackPan system is designed and engineered to protect the environment from contamination caused by spillage and leaks on the rail network. Compared with traditional steel and concrete applications TrackPan provides an inexpensive and flexible alternative.

The TrackPan system manufactured by Unipart Rail is considered the best available technology offering protection from spills by collecting fluids and substances and then transferring them to a proper waste treatment system.



## Reasons To Choose Trackpan

- Excellent protection from spills and contamination
- Economical alternative compared to traditional solutions
- No disturbance to track during installation solutions
- Durable, low maintenance construction
- Easy to install, full engineering on-site support
- Site failure eliminated - 100% of equipment functionally confirmed prior to site delivery

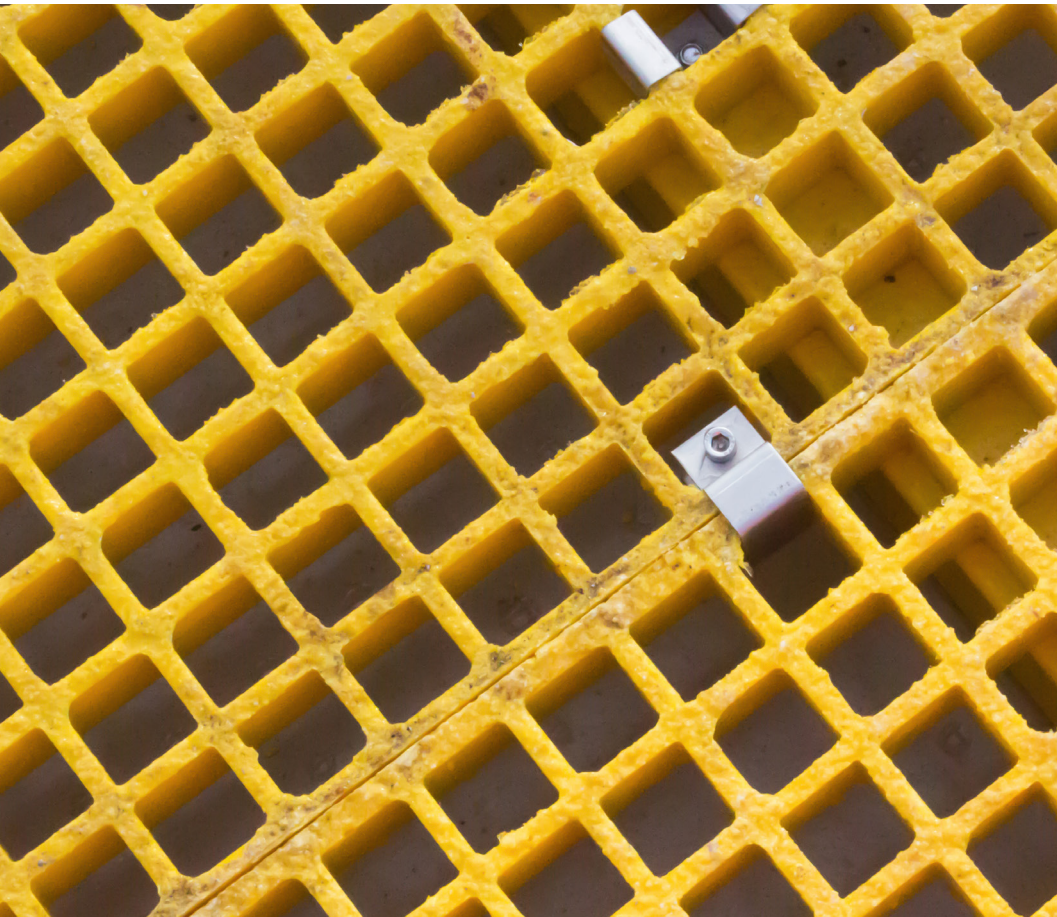


## Unipart Rail TrackPan System Cleans Up

---

Not only can spills in railway facilities cause enormous harm to the environment, they can also pose long-term health hazards and possible damage to the railway infrastructure. In addition to the effects of spill and contamination the costs and reputational damage caused by such spills can be very expensive and in some cases irrecoverable.

Even when care and attention is taken, spills can still occur. This coupled with general leakage from rolling stock can be very difficult to resolve.



## Increased flexibility and Smoother Project Execution

---

All assembly hardware is supplied. The pans simply bolt down to the existing railway sleepers. It can be put into service within hours of delivery and if necessary can be relocated to another location if depot operations change. Each unit is manufactured to provide the maximum self-containing capacity whilst adhering to railway clearance standards.

The modular system allows additional sections to be added or reconfigured. If a section becomes damaged its construction means that only the damaged sections need to be replaced.



Contact us today to learn how TrackPan can benefit your business by offering a solution to protect the rail network from contamination.



For more information, please contact:

**Unipart Rail**

[www.unipartrail.com](http://www.unipartrail.com)

Jupiter House  
First Point, Balby Carr Bank  
Doncaster  
DN4 5JQ