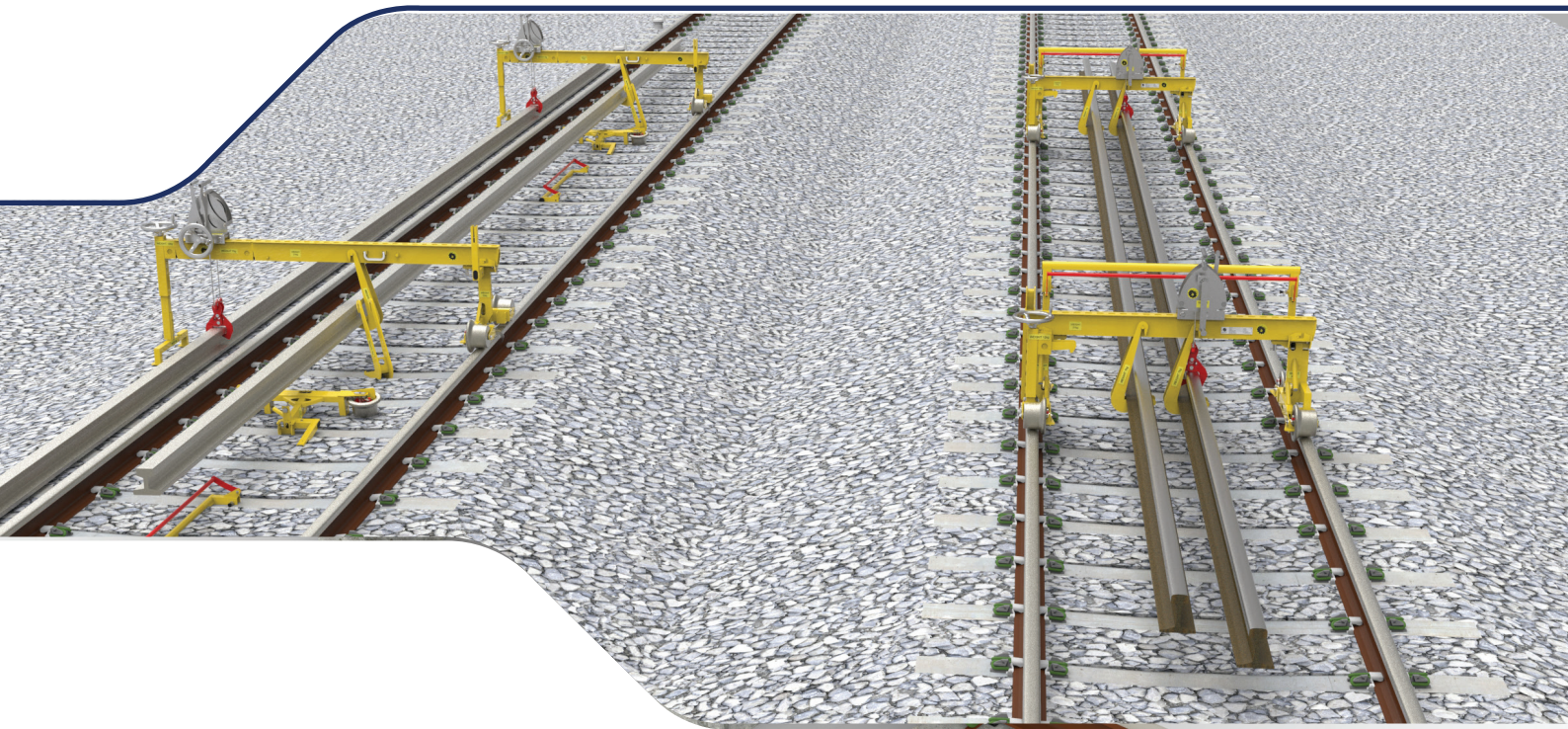


Raven Rail Mover

Designed to maximise safety and minimise risk.



Hand portable solution with minimal parts

Can be used on sites with limited access

Easy to assemble and dismantle

Four wheel braking system

The Raven Rail Mover has been designed for lifting, carrying and installation of running and conductor rails during rail track maintenance operations.

Designed to maximise safety and minimise risk, this performance improving, hand-portable solution is ideal for use on sites with limited access including narrow paths and steps.



The rail borne trolley runs on profiled, flanged steel wheels which provide low friction, therefore minimising the force required to propel it. All handles and controls have been specifically designed to minimise the effort required for operation.

Fail safe brakes act on every wheel to slow and hold the Raven Rail Mover on gradients up to 1:25 and the units can also work on track canted up to 180mm.

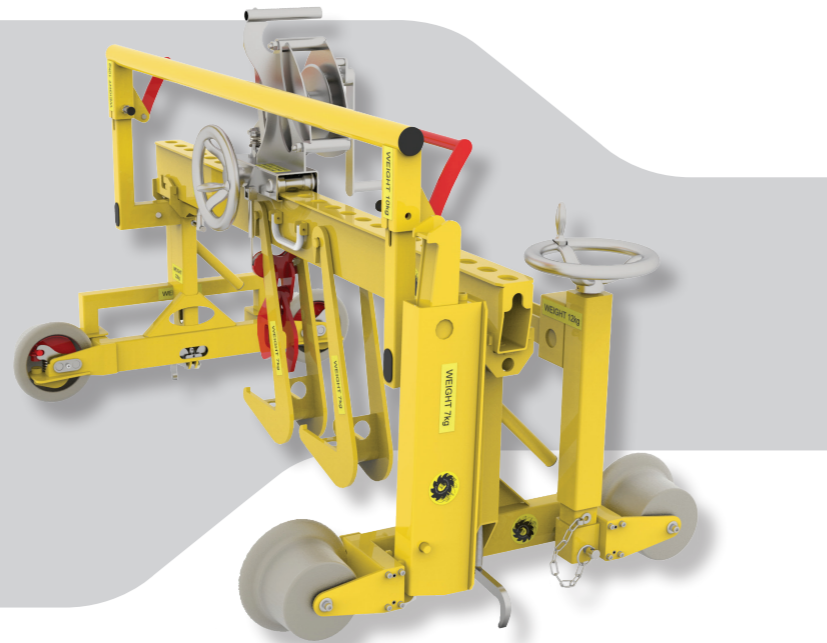
Units are deployed in pairs as standard to carry rail sections up to 20m long. Multiple units can be used to carry longer rail lengths.

The Raven Rail Mover is designed to be manually portable when dismantled into sections. Each section weighs no more than 22kg and may be carried by one or two people, depending on under foot and environmental conditions. The heaviest sections - the Wheelset Assemblies, Lifter Assembly and Main Beam Assembly - are fitted with carry handles designed to make them as easy as possible for one person to carry where conditions allow.

Standard Raven units are suitable for Standard Gauge (1435mm) track but broad gauge and narrow gauge versions are available. An extension kit is also available which allows the standard Raven unit to be used to deliver and collect DC third rail sections or to place or remove running rail sections from the sleeper ends.

Features and Benefits

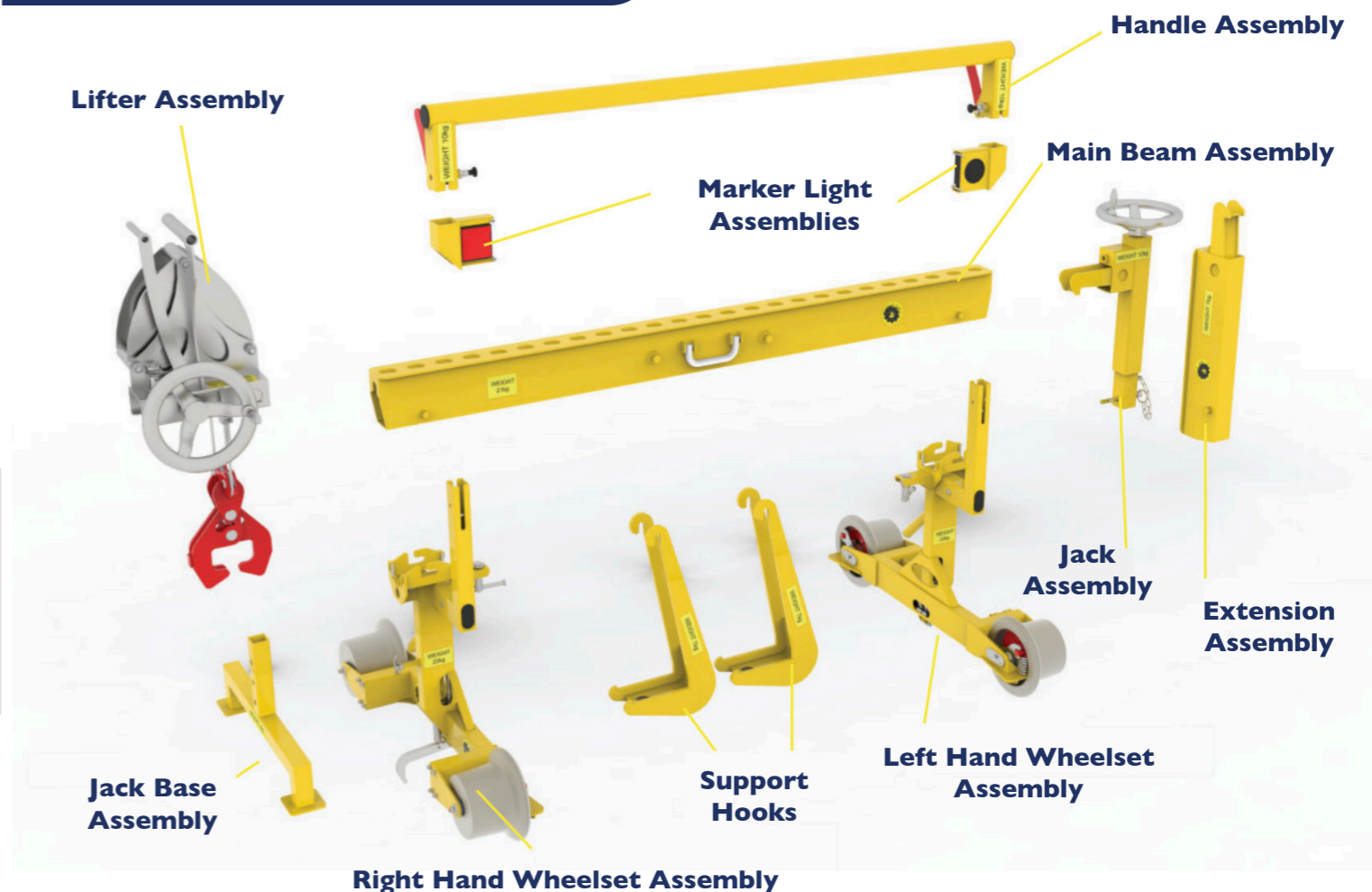
- Fewer and lighter parts
- Easy to assemble and dismantle
- 4-Wheel Braking
- Full Width Push Bar & Brake Release
- Carry Handles
- Reaches to Sleeper Ends
- No need to De-Rail



Technical Specifications

Specifications - standard gauge Raven and extension kit	
Rail Gauge (nominal)	1435mm
Working Load Limit (per Raven)	1,250 kg
Working Load Limit (per Pair of Ravens)	2,100kg
Maximum Component Weight	22kg
Total Weight (without extension kit)	93kg
Extension Kit Weight	20kg
Lift Capacity	750kg
Lifting Mechanism	Hand Winch with Automatic Brake
Wheel Material	Steel
Wheel Profile	PI
No. of Braked Wheels	4
Maximum Track Cant	180mm
Maximum Gradient	1:25
Stability Coefficient (unladen - standard model) fore & aft/lateral	0.865 / 1.870
Stability Coefficient (unladen - with extension kit) fore & aft/lateral	0.928 / 1.109

Product Assembly



About Unipart

The Unipart Group is a leading UK manufacturer, full service logistics provider and consultant in operational excellence. Operating across a range of market sectors, including automotive, manufacturing, mobile telecoms, rail, retail and technology, Unipart offers a breadth of services to a wide range of blue chip clients internationally.

About Thomson Engineering Design

Thomson Engineering Design has been manufacturing specialised equipment for rail renewals and repairs since 1999 and in that time have become the premier supplier of attachments for Road Rail Vehicles. Offering a range of over 100 products for all rail maintenance sectors and activities, Thomson are a key supplier for all rail plant companies in the UK.



Unipart Rail is the export distribution partner for Thomson Engineering Design, for enquiries contact railplant@unipartrail.com



Unipart Rail

Jupiter Building, First Point, Balby Carr Bank,
Doncaster DN4 5JQ
Tel: +44 (0) 1302 731400
email: enquiries@unipartrail.com



Visit www.unipartrail.com for details of our Worldwide Regional Offices